

Attendance: SOLD OUT

XChange® University: IT Security

AUGUST 14, 2019 • DENVER, CO



THE CHANNEL CO.®

From Basement to Boardroom:

How Information Security Has Changed Over the
Last Ten Years and Where It Is Heading

August 14, 2019

Jerald Dawkins

True Digital Security

jdawkins@truedigitalsecurity.com



2009



 BankInfoSecurity.com

The President's 10-Point Cybersecurity Action Plan

Though he said he would personally pick a cybersecurity adviser, no choice has been made. That person, though, will not report directly to the president, which ...

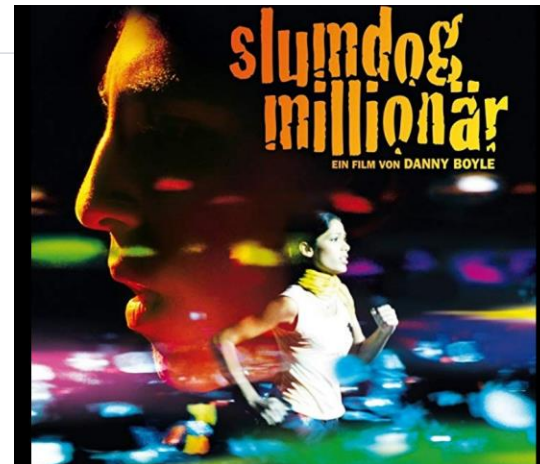
May 29, 2009



 BankInfoSecurity.com

Heartland Payment Systems Discovers Data Breach

"The indication that it is tied to wider cyber fraud operation comes directly from a report by Baldwin as "quite a sophisticated attack," he says it



2008/09 Verizon Data Breach Report

- Align process with policy
 - 59% had policies that were not followed
- Achieve “essential” then worry about “excellent”
 - 83% breaches not considered highly difficult
- Monitor event logs
 - 82% data was available, just wasn’t reviewed
- Increase Awareness
- Audit User Accounts and Credentials
- Secure business partner connections
- Test and Review Web Applications

~~Executive~~ View of Security

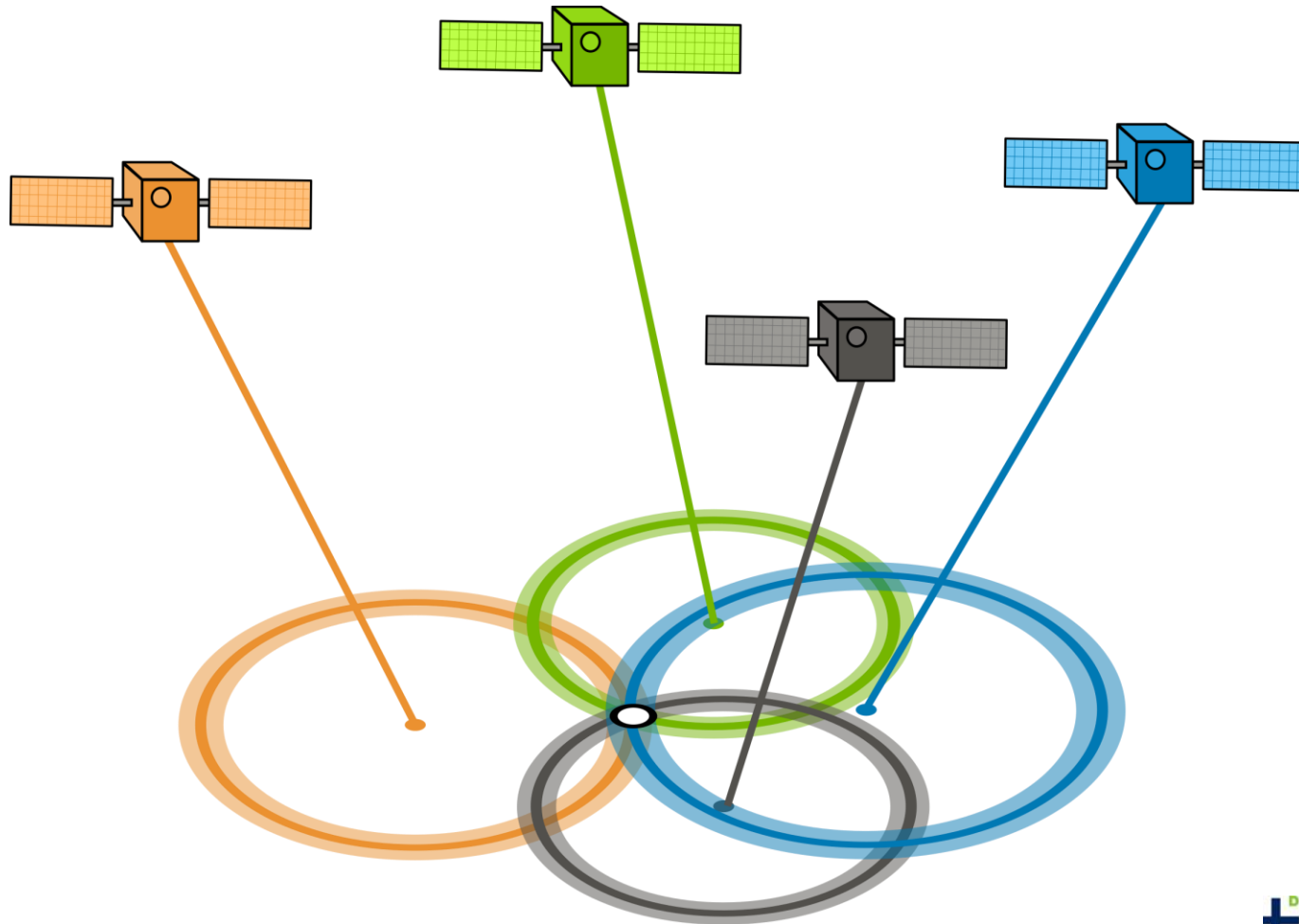


Game Changer...



Security is a Team Sport

IT, Security, Legal, Human Resources, Project Management, Development...



Mind the Gap



SECURITY REQUIREMENTS	NIST SP 800-53 <i>Relevant Security Controls</i>		ISO/IEC 27001 <i>Relevant Security Controls</i>	
3.4 CONFIGURATION MANAGEMENT				
<i>Basic Security Requirements</i>				
3.4.1 Establish and maintain baseline configurations and inventories of organizational systems (including hardware, software, firmware, and documentation) throughout the respective system development life cycles.	CM-2	Baseline Configuration	<i>No direct mapping.</i>	
	CM-6	Configuration Settings	<i>No direct mapping.</i>	
	CM-8	System Component Inventory	A.8.1.1	Inventory of assets
			A.8.1.2	Ownership of assets
3.4.2 Establish and enforce security configuration settings for information technology products employed in organizational systems.	CM-8(1)	System Component Inventory <i>Updates During Installations / Removals</i>	<i>No direct mapping.</i>	

What Does the Future Hold

- Further expansion and integration of technology
 - IOT, ICS, SCADA
 - Manufacturing (IOT, 3D Printing, Real Time Manufacturing)
- Contextual Privacy
 - GDPR, recent breaches, courts further defining “safeguarding” information
- Legal involvement
 - At some point they need to join the conversation
 - GDPR, New York, SEC forcing the conversations...
- Continued movement to outsource requires enhanced Vendor Management / Validation
- Technology Driven Experiences, “AI”
 - Customer Service
 - Employee Experience
- IT as a Consumable, not a Break Fix

Thank You...

THE **CHANNEL** CO.[®]

Jerald Dawkins

jdawkins@truedigitalsecurity.com





Real problems... vs FUD



Moving to the Boardroom

- Governance Perspective
 - Take Responsibility – Customer and Channel
 - Lead, set an example
 - IT/Security requires a seat at the table
- IT Perspective
 - Need to learn what it takes to sit at the table
 - Understand it's a team sport
 - Legal, Audit, Business, Security, Governance, Compliance
- Legal Community
 - Understand you are in the game

7 Stages of Cybersecurity “Grief”

